

Libraries Strategic Review CML Briefing

Background to new service delivery
model

 inderby.org.uk/runalibrary  

Background to proposals

- Libraries are a statutory service under the 1964 act
- Council aspiration that all libraries remain open
- Financial challenges mean savings of £648k needed
- The needs assessment and the feedback from the consultation has informed the proposals
- CML opportunity aims to avoid closures, make the savings and meet the community needs



Background to proposals

- Other Councils have taken a similar route
- Locality will tell us more about what has happened elsewhere in the country
- Communities can help shape local services
- Grants/non financial support will be made available
- CML offer could be different in different parts of the City – all options will be considered

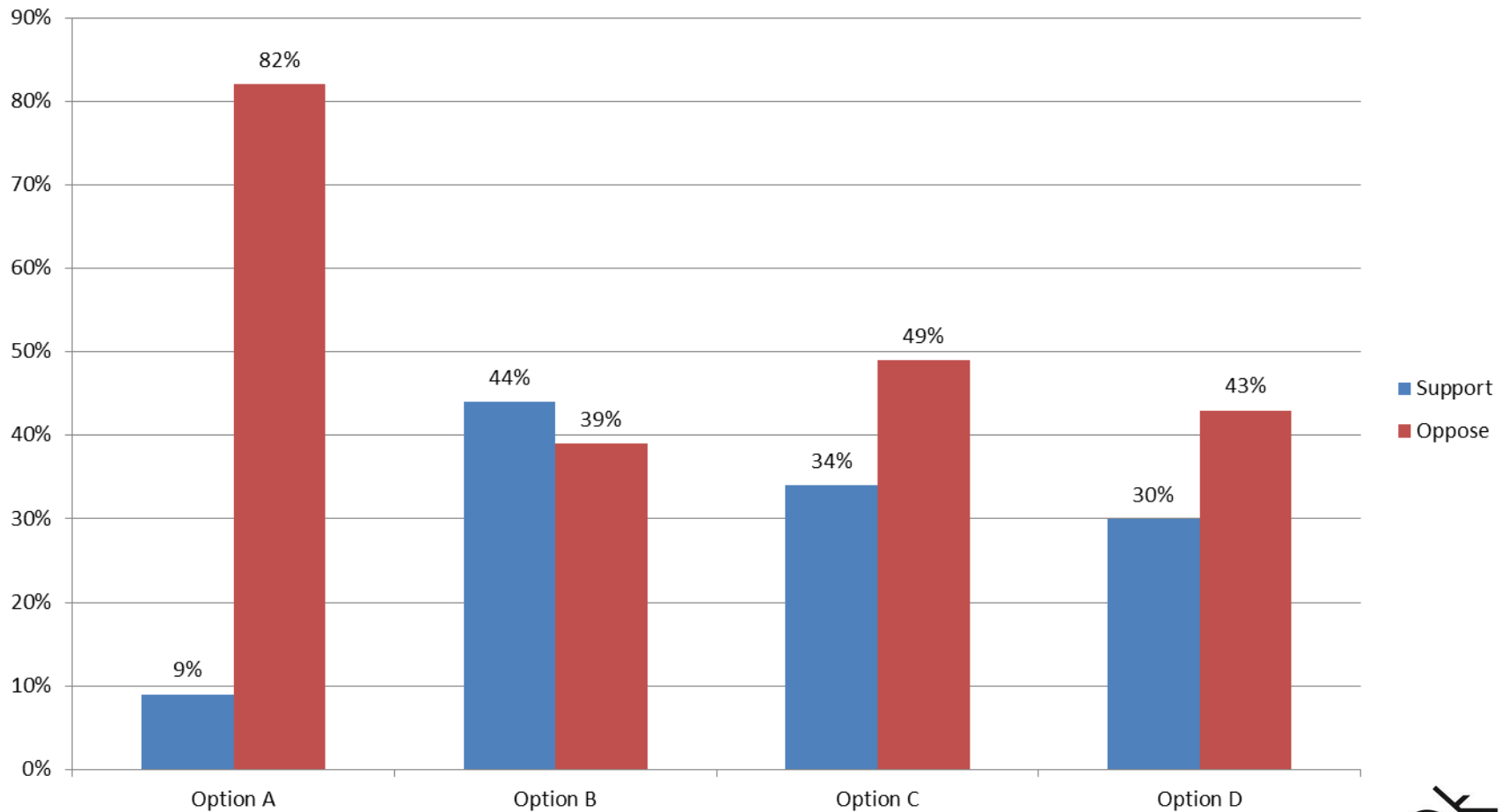


Recap of Options consulted on

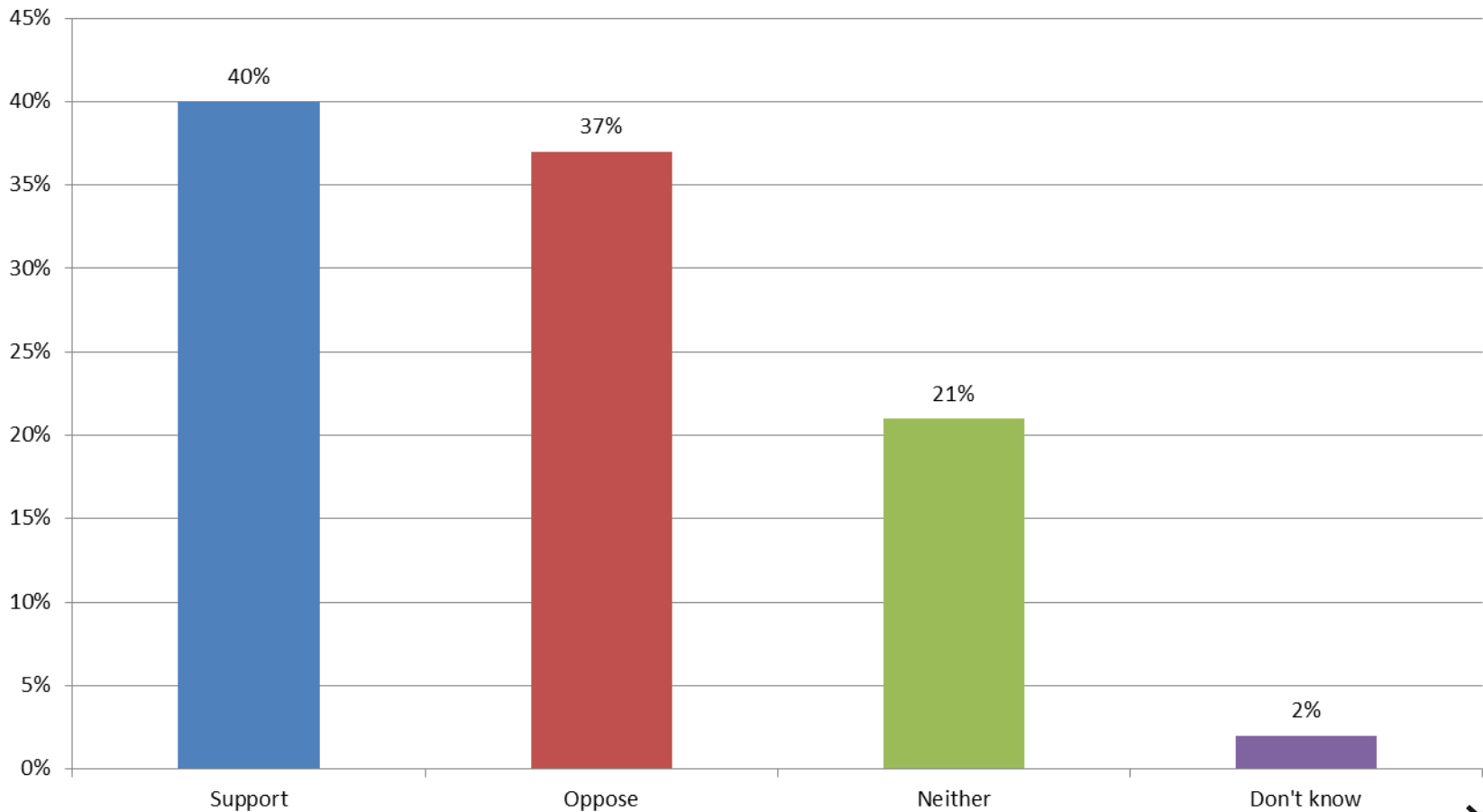
- **Option A:** 4 Council libraries (increased hours) 11 libraries close. Savings £967k
- **Option B:** 4 Council libraries (increased hours). (Up to) 11 CMLs, average grant £17.5k. Savings £648k
- **Option C:** 10 Council libraries. 5 libraries close. Savings £648k
- **Option D:** 8 Council libraries. (Up to) 7 CMLs, average grant £10k. Savings £648k



Headline results for the Options



Headline results for Central/Riverside





Responding to the Consultation

INTRODUCING OPTION B *PLUS*



Derby City Council

Option B plus

- Increases statutory offer from 4 to 5 libraries run by the Council
- Provides increased opening hours at them
- Reduces impact on stock capacity of Riverside by investing £160k in increased shelving
- Provides more support for CMLs offer





Responding to the Consultation

COUNCIL-RUN LIBRARIES



Derby City Council

5 Council-run libraries

- Increased opening hours :
 - Riverside 46 currently 33 at Central
 - Alvaston 32 currently 26
 - Pear Tree 32 currently 26
 - Local Studies 30 currently 26
 - Mickleover 30 currently 26

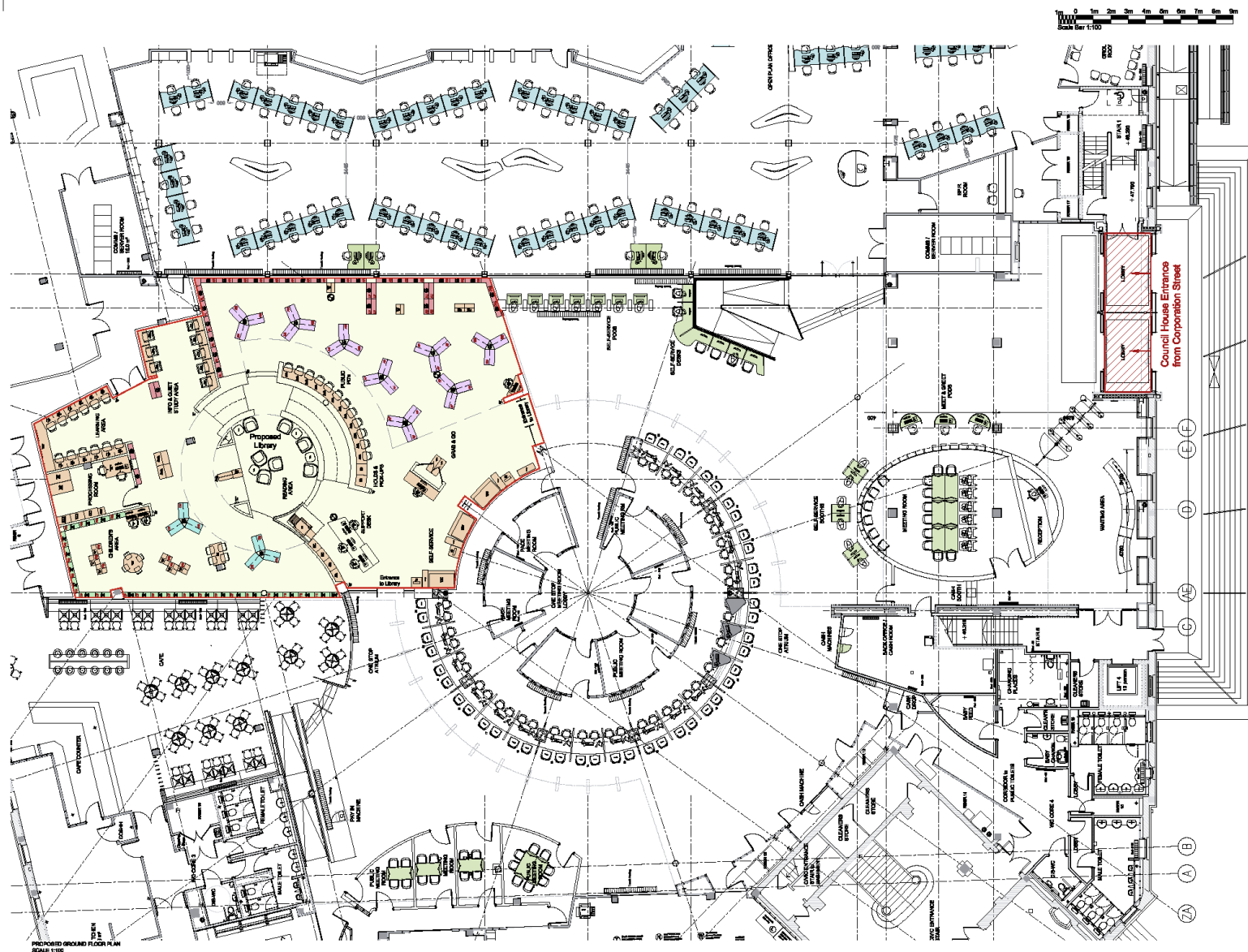




RIVERSIDE LIBRARY



Derby City Council



The copyright of this drawing is retained with Corstorphine + Wright Ltd and must not be copied or reproduced without the consent of the company.
 Physical reproduction may only be taken from this drawing. DO NOT SCALE.
 All construction must follow the drawings and be responsible for checking all setting out dimensions and carrying the burden of any discrepancies prior to any manufacture or construction work.

NOTES:

- Red Shading - 1.5m
- Yellow Shading - 1.5m
- Blue Shading - 1.5m
- Green Shading - 1.5m

- AF Adult Patient
- AN Adult Non-Patient
- GN Games
- OW One Way Louver
- BS Book Stacks
- LP Large Print
- FL Foreign Language
- AU Audio Books
- TE Tapes
- CP Children's Fiction
- CH Children's Non-Fiction
- PS Picture Books
- YR Young Reads
- AM Audio & Video

05 10/04/2017 Drawing issued revised. Additional Derby council issued.
 06 10/04/2017 Library particular highlighted. Drawing changed revised.
 07 10/04/2017 Map correction revised.
 08 04/05/2017 Map correction revised.
 09 04/05/2017 Map correction revised.

DERBY CITY COUNCIL

Project
 DERBY COUNCIL HOUSE
 REFURBISHMENT WORKS

Drawing Title
 PLAN - PROPOSED
 LIBRARY LAYOUT
 OPTION 1

| Drawn | Revised | Project No. | Scale | Date |
|-------|---------|-------------|------------|------------|
| CMS | RW | A1 | 1:100 | APRIL 2017 |
| 16734 | | | 16734-0005 | 08 |

**CORSTORPHINE
 + WRIGHT
 ARCHITECTS**

Warrick
 London
 Birmingham
 Manchester
 Newcastle

Brook Hill Brook Street Warrick CV34 4SL
 Tel: 01928 558444 www.corstorphine-wright.com

Derby City Council



Responding to the Consultation

CML-RUN LIBRARIES



Derby City Council

10 CML-run libraries

Opportunity to consider CMLs for:

- Allenton
- Allestree
- Blagreaves Lane
- Chaddesden*
- Chellaston
- Derwent
- Mackworth
- Sinfen
- Spondon
- Springwood

*The Phillip Whitehead Memorial Library



Derby City Council

Importance of CMLs

- Helps retain a valuable community asset
- Provides more availability of libraries in city
- Enables more local needs to be met/shaped
- Accesses new opportunities and funding
- Working with the Council it could enhance the library offer across the city
- Creates local ambitions and outcomes





locality.org.uk

**Locality is the national network
of ambitious and enterprising
community-led organisations,
working together to help
neighbourhoods thrive**

locality.org.uk

[@localitynews](https://twitter.com/localitynews)





We represent over 500 (and counting) community-led organisations and 200 associate members across England

locality.org.uk

locality

What we do

- We help people set up and run community owned and led organisations
- We support organisations to exchange ideas and best practice
- We work to influence government and others nationally and locally

CHAAT CAFE

We run major national programmes which support and empower local communities

locality.org.uk

[@localitynews](https://twitter.com/localitynews)

locality

Our mission is to develop a network of ambitious and enterprising community-led organisations with a strong, collective voice and to inspire community action so that every neighbourhood thrives

locality.org.uk



Locality and libraries



- Community Hubs
- Assets
- Community Led Solutions
- Sustainable Business Models / Resilient Community Services
- Service Transformation



Potential benefits of community libraries

- Retaining local access to library services
- Increased community involvement and control of local services
- Increased use of and access to services.
- Service innovation and diversification.
- Supporting sustainable community enterprises.



“Rescuing a library is one thing -
establishing it for the long term
is something else.”



Potential challenges / barriers for community libraries

- Attracting volunteers from range of backgrounds, training and supporting them
- Quality of service
- Clarity over roles, relationship between paid staff and volunteers
- Entrepreneurial skills and motivation
- Strain on community organisations



Serio research: success factors

- Variation, variation, variation - one size does not fit all!
- Income generation is critical
- High dependency of numbers and skills of volunteers
- Good communication, understanding and strengthening links between Local Authorities and community libraries



Lessons in working with communities

- Consistent and transparent communication is important in building trust. A central info point / safe space is helpful.
- “Success is proportionate to the flexibility and support provided by authority”
- You can only move as fast as the community can, or you won't bring them with you.



Community Library Checklist



Organisational development

- Willing group of people to take forward the development
- Capacity and skills?
- Formalising the group/legal form
- Community support



Services and business model

- Clarity of purpose; vision, mission and objectives
- Library management system and book stock
- How will the service be staffed/role of volunteers?
- Income generation
- Cashflow



Types of income for community libraries



- Service Contracts
 - Public sector
 - Private sector
- Retail
- Fee paying services
- Grants, sponsorship and local fundraising
- New / Emergent ICT services

Information and digital technology

- What technology do you need to deliver your objectives?
- Who will be responsible for its management and maintenance?



Securing support

- Who are your key stakeholders and how will you engage and work with them?
- Who will be responsible for its management and maintenance?
- Relationship with DCC and a common understanding
- Who can you rely on?
- Start up funding



Community benefit and outcomes

- What are you trying to achieve and how will you measure success?
- What does DCC expect from your monitoring?
- Demonstrating impact to community and other stakeholders?



Asset issues

- Where will the library service be run from?
- Checks to determine running/maintenance costs?
- Seek legal support for management agreement



Sources of information/ support

[http://locality.org.uk/projects
/community-libraries/](http://locality.org.uk/projects/community-libraries/)

[*https://librariestaskforce.blog.
gov.uk/*](https://librariestaskforce.blog.gov.uk/)





locality.org.uk



Responding to the Consultation

SUPPORTING COMMUNITY MANAGED LIBRARIES



Derby City Council

Supporting CMLs - Key Documents

- Application process:
 - Library Information Pack
 - Library Application Pack
 - Library Catchment Profile
- Handing over a CML:
 - Management Agreement
 - Heads of Terms/Lease Agreement (optional)
 - Grant Agreement (optional)



Supporting CMLs - Process

- Expression of Interest process on page 17:
 - Stage 1: Registration
 - Stage 2: Application
 - Stage 3: Evaluation
 - Stage 4: Decision
- CML opportunity
 - Required to meet the standards to be considered
 - Optional to consider the packages and current facility
 - In addition to statutory service



Supporting CMLs - Criteria

- Successful Application criteria in section 3.5:
 - Minimum Standard Resource
 - Ambition
 - Equalities
 - Engagement
 - Governance
 - Deliverability
 - Sustainability



Supporting CMLs

- CMLs need to deliver Minimum Standard Resource:
 - Offer book lending services catering for varied needs
 - Provide access to the internet and wi-fi on the premises
 - Provide opening hours offering reasonable access
 - Welcome all sections of the community
 - Promote the facility to children and adults
 - Ensure the library is safe to use by everyone
 - Operate the library for the benefit of the community
 - Ensure people have an opportunity to participate



Supporting CMLs

- Enhanced Council support 1 (optional)
 - Grant, induction training and property maintenance
 - otherwise fully independent of Council
- Enhanced Council support 2 (optional)
 - Grant, induction/ongoing training; property maintenance
 - Internet access and wi-fi
 - access to library computer system
 - stock exchanges with Council-run libraries
 - some limits to freedoms, eg suppliers, charging policies



Supporting CMLs

- Permanent Community Libraries Development Team
- Training support – will be refined
- Funding for Infrastructure Organisation support
- One-off funding of £90k for CMLs to bid into
- Crowdfunding
- New funding streams available e.g. High Street



Supporting CMLs - Grants

- Annual cash grant until March 2022; review October 2020 to March 2021
- Indicative grant of £17.5k - actual grant is variable
- Grant comprises two elements:
 - General expenses (Covering property / running costs)
 - Bookfund (Council owns and CML custodians of books if the CML signs up to the enhanced support package)
 - Ring fenced Bookfund of £55k



Supporting CMLs - Timeline

- Launch Expression of Interest process: 4 September
- Public information sessions: 18/19 September
- Deadline for Registrations of Interest: 9 October
- Deadline for Expressions of Interest: 4 December
- Panel evaluations: During December
- Libraries handed over: as soon as practicable



Questions?

 inderby.org.uk/runalibrary  